



Fulham Road, SW3

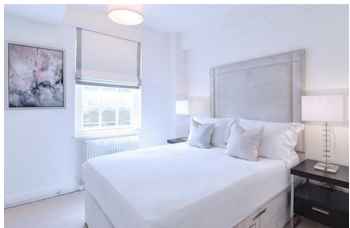
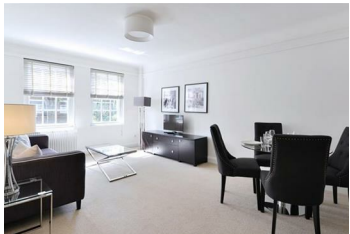
£1,050 Per Week

Located in the highly sought-after Brompton Cross area, these beautifully situated Chelsea apartments are just two minutes away from South Kensington underground station (served by the Piccadilly, District and Circle lines) and within walking distance of Sloane Square underground station. Two minutes away on the corner of Fulham Road is Sloane Avenue, a major thoroughfare from South Kensington to Sloane Square and home to a number of well-stocked supermarkets and other amenities.

This flat is a stunningly bright and spacious two double bedroom, two-bathroom apartment located in the heart of fashionable Chelsea and minutes from South Kensington tube, Harrods, Buckingham Palace, and Hyde Park. The apartment comprises of two double bedrooms, a spacious well stocked kitchen, and a bright open-plan reception/dining room alongside two well-proportioned bathrooms featuring a bath and shower. It is located on the 2nd floor with a lift and there is a great communal garden at the back to enjoy the sun.

We are delighted to offer a stunning two-bedroom apartment with a large private terrace with spectacular views over Kensington. The apartment is situated within a super prime Georgian building in the heart of the Royal Borough of Kensington & Chelsea.

The 845 SQ FT apartment is situated on the second floor and comprises an open-plan integrated kitchen, a large reception/ dining room with impressive entertaining space, bi-fold doors leading onto a superb inside/outside private south-facing terrace, two double bedrooms with ensuite bathrooms, & guest



- Period, portered building
- Central Chelsea location
- Walking distance to both South Kensington and Sloane Square underground stations
- Lift service
- 24 hour emergency helpline & service

